

▶▶ T2001系列三相滤波器



特征

- ◆ 双极共模滤波
- ◆ 非常高的共模抑制比

典型应用

- ◆ 抑制过冲电压 du/dt 产生
- ◆ 减小轴电流，防止爆轴
- ◆ 变频器，伺服驱动器输出端

技术参数

工作电压	440VAC
工作频率	0~400Hz
线-线耐压	2100VDC
线-地耐压	2700VDC
绝缘电阻	>100MΩ@500VDC
工作温升	<30°C@40°C
气候类别 (IEC 60068-1)	25/085/21

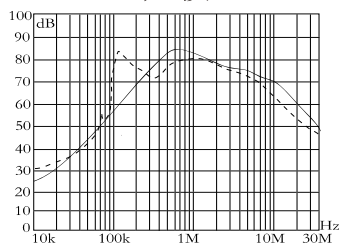
选型列表

产品型号	额定电流 (A)	泄漏电流 (mA) @250VAC	外壳	连接端子		电路原理图
				通用	可选	
DTT2001-6N-M6-E27	6	<0.5	E27		—	
DTT2001-10N-M6-E27	10	<0.5	E27		L1	
DTT2001-20N-M6-E27	20	<0.5	E27		L1, L2	
DTT2001-30N-M6-F27	30	<0.5	F27		L1, L2, L3	
DTT2001-50N-M8-F27	50	<0.5	F27		—	

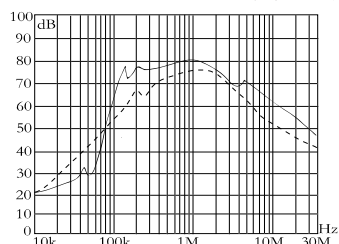
▶▶ T2001系列三相滤波器

插入损耗

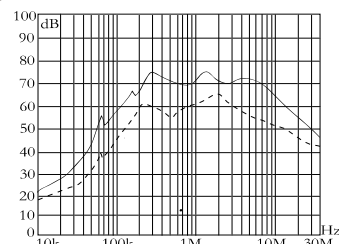
—— 共模 - - - - - 差模 (50 Ω / 50 Ω 测量系统 符合IEC/CISPR NO. 17)



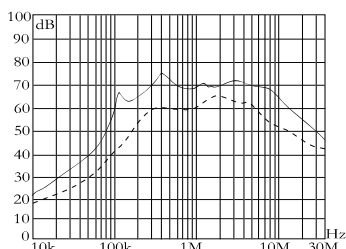
DTT2001-6N-M6-E27



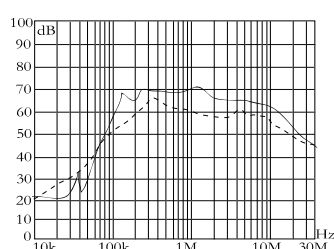
DTT2001-10N-M6-E27



DTT2001-20N-M6-E27

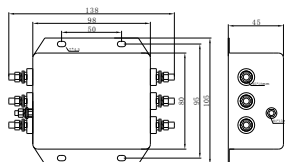


DTT2001-30N-M6-F27

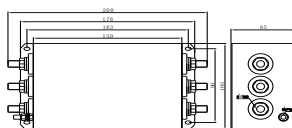


DTT2001-50N-M8-F27

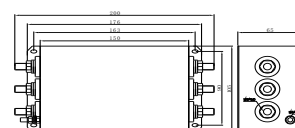
外形尺寸(mm)



E27 (M6)



F27 (M6)



F27 (M8)